

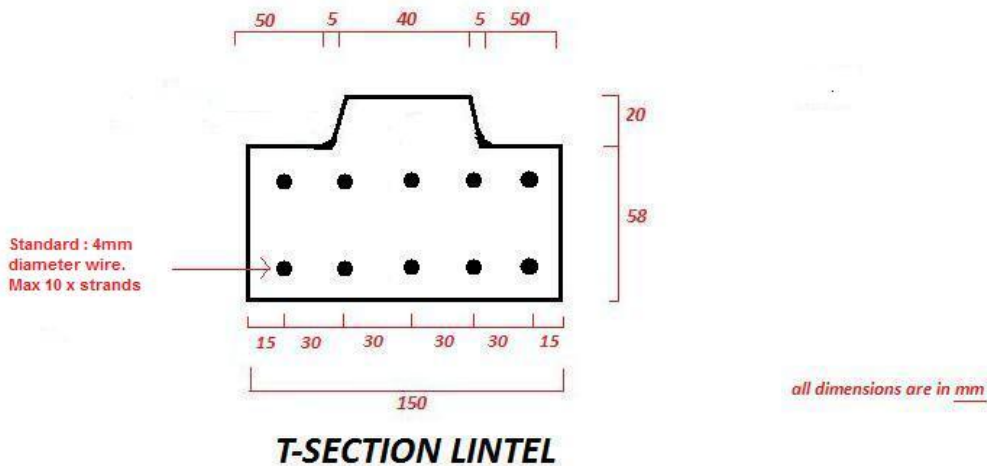
TEL 011 852 4011
FAX 011 854 6688
CELL 072 888 6643
CELL 083 639 5786
 VAT# 4130254313 CK# 2008/248435/23

RIB & BLOCK FLOOR SLAB MANUFACTURERS
 DESIGN SUPPLY ERECT CAST CERTIFY

www.royalconcrete.co.za
royalconcrete@gmail.com
 135 ROSE AVE. LENASIA P.O.BOX 900 LENASIA 1820

Rib and Block Slab Specification

Below are the slab components that we supply:



1. Prestressed Ribs:

- Concrete for Ribs : 40Mpa (Machine Extruded)
- Wire Strand : 4mm Vonmoos – prestressed to 70% breaking force)
- No. of Strands in Rib : As per your specification (Up to 4.5m = 5 strands)(4.6m to 8m = 8 x strands)
Maximum 10 x strands
- Weight : 21Kg/meter

2. Hollow Blocks and Polystyrene Blocks



Sizes are:

	Hollow Block Weight	Polystyrene Weight
S120 – 450mm x 210mm x 120mm(h) – 170mm slab	(15Kg)	no polystyrene
S150 – 450mm x 210mm x 150mm(h) – 200mm slab	(16Kg)	(11.5Kg)
S195 – 450mm x 210mm x 195mm(h) – 255mm slab	(20Kg)	(11.5Kg)
S240 – 450mm x 210mm x 240mm(h) – 300mm slab (for these we use polystyrene blocks with trays)		(11.5Kg)
S280 – 450mm x 210mm x 280mm(h) – 340mm slab (Hollow blocks or polystyrene blocks with trays)	(25Kg)	(11.5Kg)

Blocks Strength : 10Mpa

3. Mesh Ref.100 (standard unless otherwise specified)



4. Y10 Cross rib steel (in 6m lengths)

